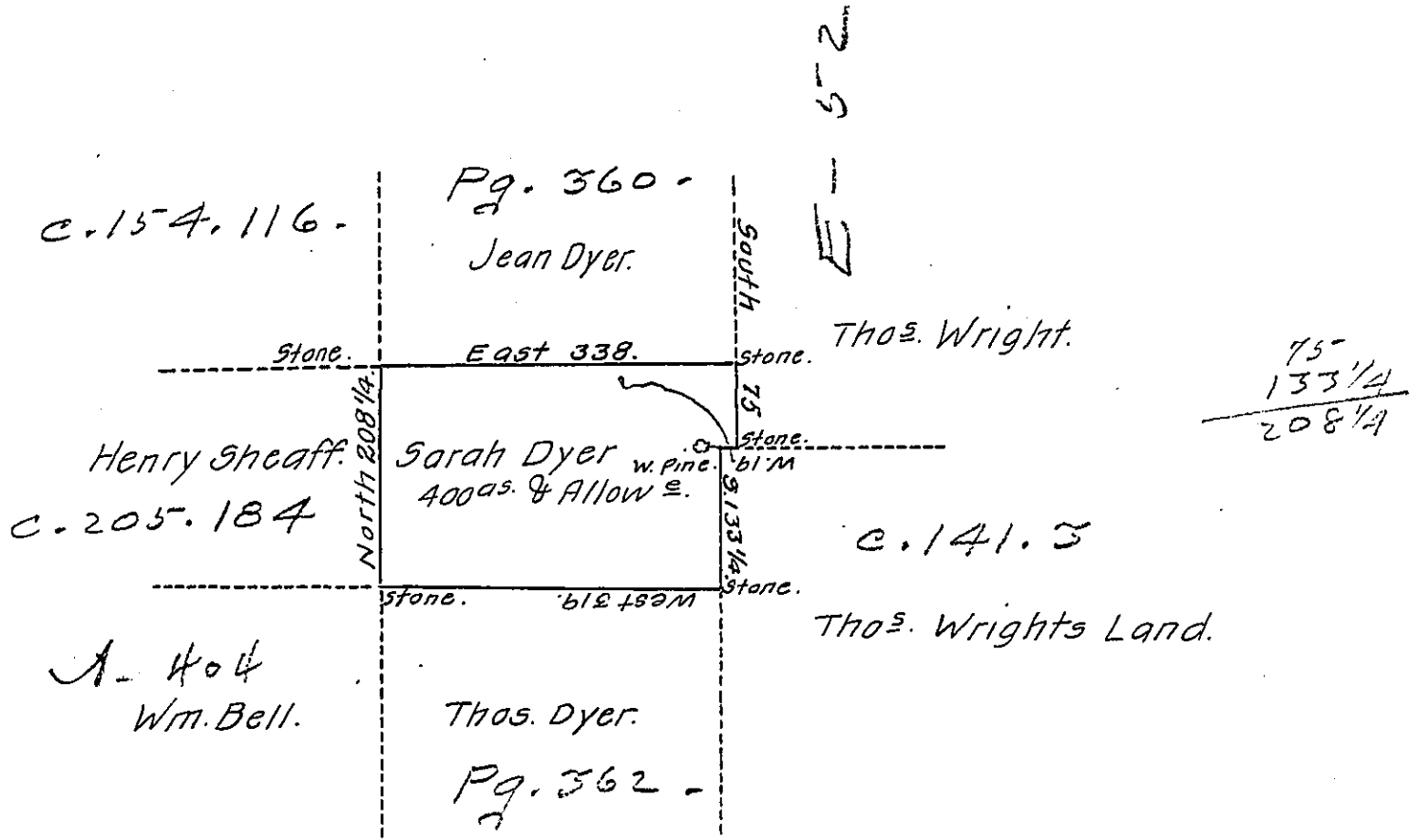


DEITSOIT -
LUZERNE



Draft of a tract of land called _____ situate on the water of Lehi- Joining land surveyed for Thomas Dyer and others in the County of Luzerne containing four hundred acres & allowance of six & Cent for roads &c. surveyed for Sarah Dyer the 13th Day of June 1792 in Pursuance of a warrant Dated the 4th Day of April, 1792.

To Daniel Brodhead, Esq; }
Surv^r Gen^l. } by Wm. Gray, D.S.

IN TESTIMONY that the above is a copy of the original remaining on file in the Department of Internal Affairs of Pennsylvania, made conformably to an Act of Assembly approved the 16th day of February, 1833, I have hereunto set my Hand and caused the Seal of said Department to be affixed at Harrisburg, this seventeenth day of July, 1911.

Henry Houck
Secretary of Internal Affairs.